

# Innovation through Design Thinking and European Collaboration



Group SDG4b: Beatriz, Catarina, Ivan, Jana and João

# Main Problems Erasmus students are facing

- Multilingual classrooms are rising globally;
- Foreign students often feel excluded or left behind;
- Teachers and non-teaching staff struggle to meet every students language needs;
- Difficulty for students to connect with other students;
- Difficulty for students to figure out easily the main facilities on campus and basic needs ;
- Lack of connection between school community in general.

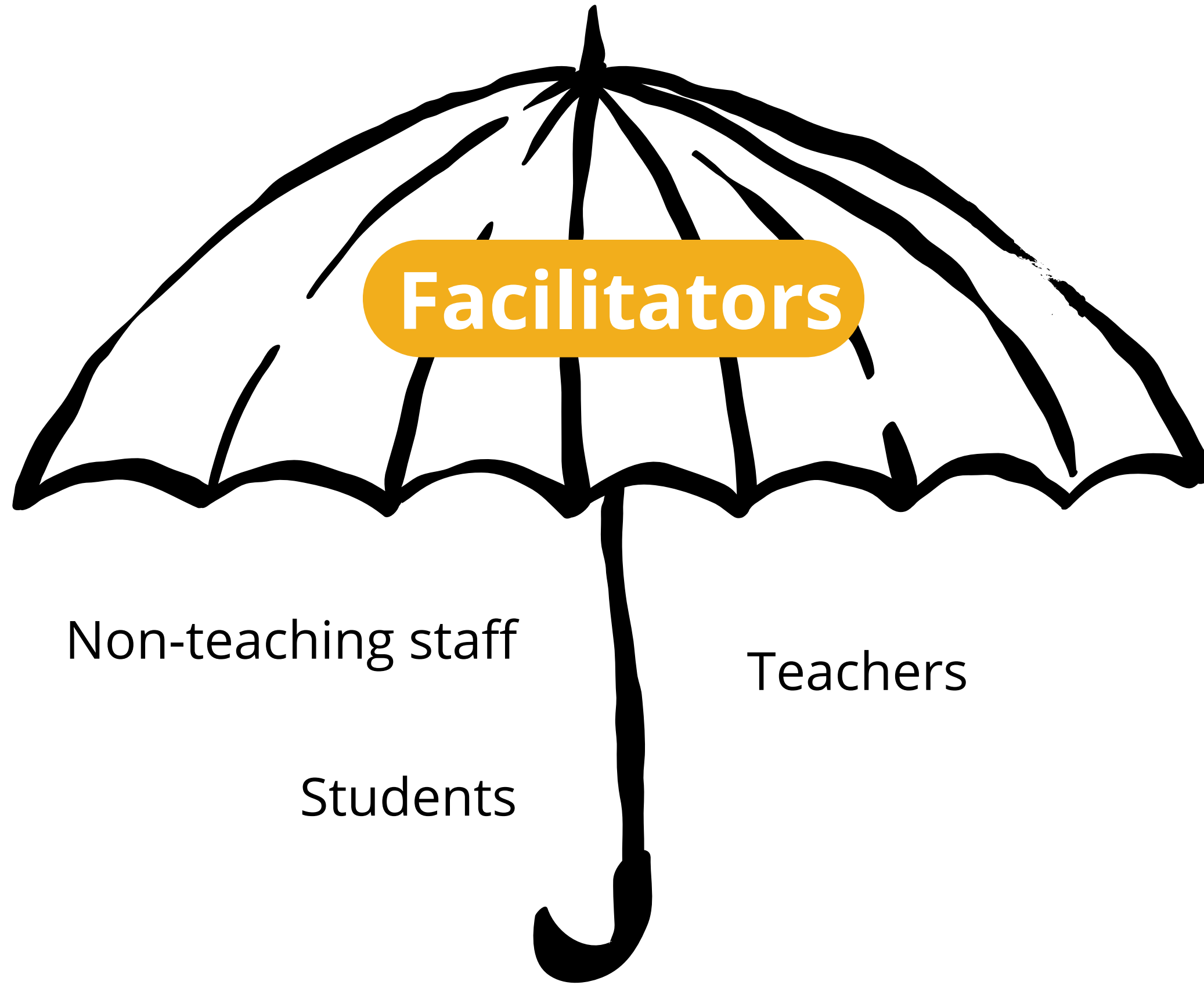
## **Mission**

To use technology based on A.I. to create new approaches of learning, while promoting equal opportunities and fostering an inclusive and welcoming environment for all.

## **Goals**

## **Vision**

To create a solution in order to every individual, regardless of their background or location, has access to inclusive and high-quality education that empowers lifelong learning and provides the needed support along the journey.



**Facilitators**

Non-teaching staff

Teachers

Students



HOW CAN TECH AND A.I. HELP  
FACILITATORS BE MORE EFFICIENT  
AND INCLUSIVE?

## **To achieve:**

Foster a sense of belonging;

Break language barriers;

Based on student's profile, personalize both education system and welcoming process.

Specific scenarios : erasmus and  
exchanged students

# Marko, 22y

Serbian

ERASMUS student  
University IPLeiria,  
Portugal

Tourism bachelor



Wants to learn more  
about local culture and  
explore the city

Afraid of having learning  
barriers

Doesn't have social media

# Ana, 21y

portuguese

needs a part-time job to  
cover her expenses

ERASMUS student  
University of Novi Sad, Serbia



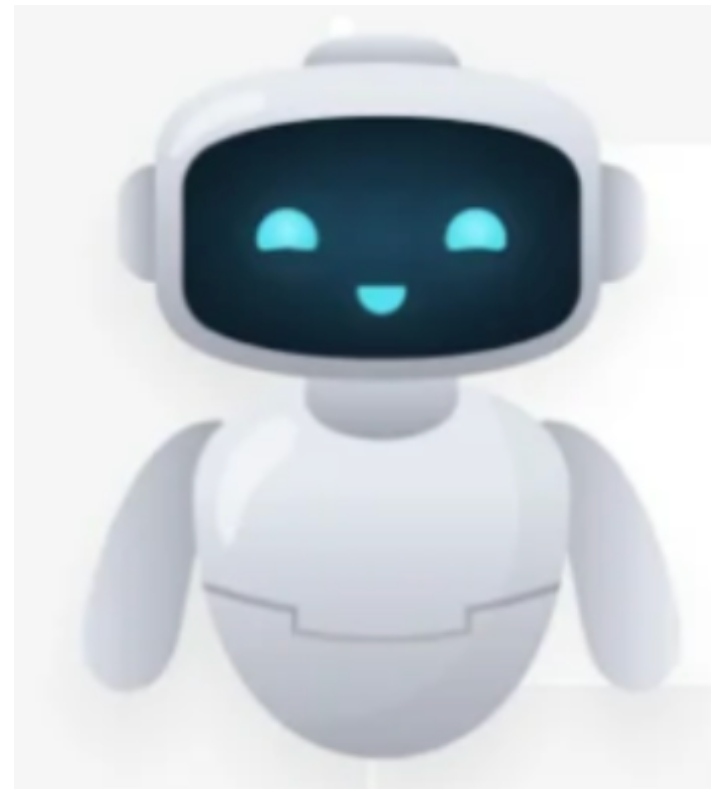
I.T. bachelor

sees erasmus as an  
opportunity to connect  
with people and grow

self-esteem issues

familiar with tech in  
her daily life

# Integration of an A.I. based Chatbot on School Platforms



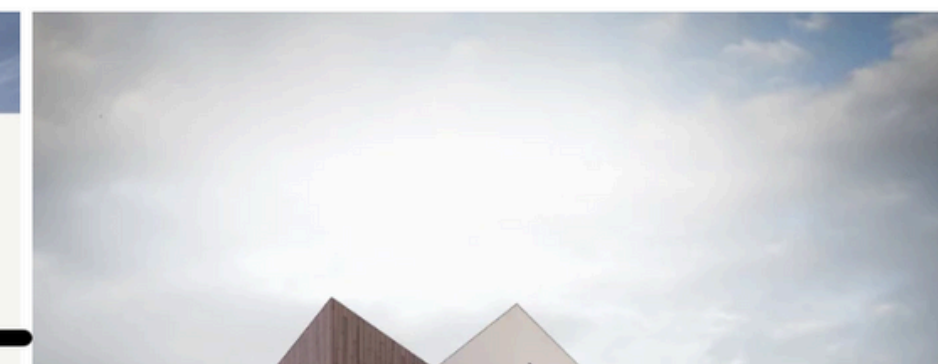
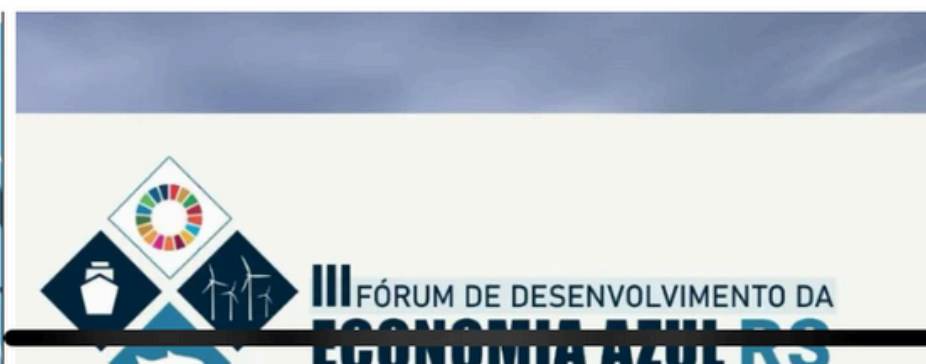
Virtual Assistant





[INÍCIO](#)

## Notícias

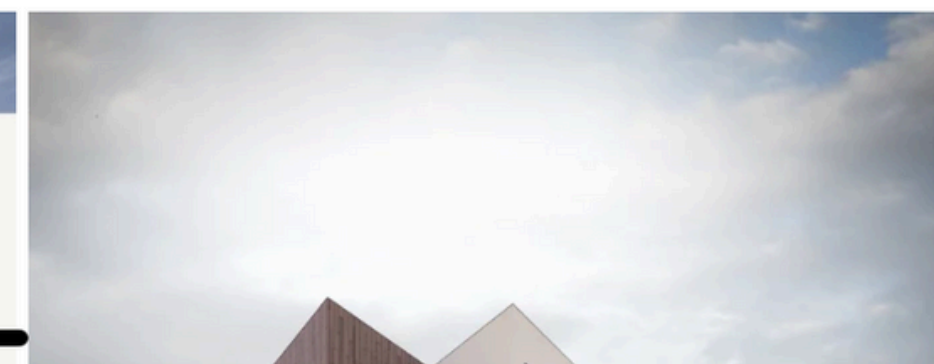
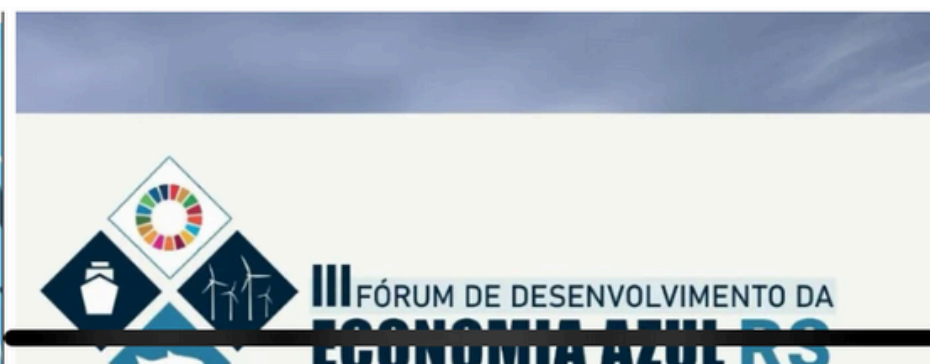






[INÍCIO](#)

## Notícias







Универзитет у Новом Саду

# Факултет техничких наука

ФАКУЛТЕТ

ДЕПАРТМАНИ

СТУДИЈСКИ ПРОГРАМИ

СТУДИЈЕ

НАУКА

САРАДЊА

БИБЛИОТЕКА



Високо место у  
друштву најбољих



Aktivirajte Windows  
Idite u dijalog „Postavke“ da biste aktivirali  
Windows.





Универзитет у Новом Саду

# Факултет техничких наука

ФАКУЛТЕТ

ДЕПАРТАМАНТИ

СТУДИЈСКИ ПРОГРАМИ

СТУДИЈЕ

НАУКА

САРАДЊА

БИБЛИОТЕКА

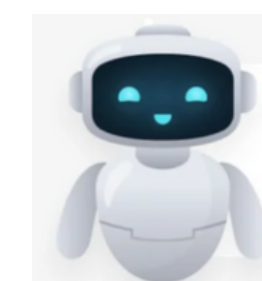


Високо место у  
друштву најбољих



Aktivirajte Windows  
Idite u dijalog „Postavke“ da biste aktivirali  
Windows.

<https://www.uns.ac.rs>



+ New chat

## Conversation

Started 2 / 06 / 2024



Guest

### Recent chats

About figma design ...

Hi! good morning chat assistant...

This is another new day for me ...

Let's discuss about anchor\_point...

I love that design and I need m....

Hi! good morning chat assistant...

Let's discuss about anchor\_point...

I love that design and I need m....

Let's discuss about anchor\_point...

Hi! good morning chat assistant...

Hi! good morning chat assistant...

Hi! good morning chat assistant...

Hi! good morning chat assistant...

Settings

Help



## Let's get started

I'm an AI powered mobility expert and I have a few questions for you

I would like to know



I need to



Can I buy designs from Envato?



Take a look at



I would like to purchase



I would like to purchase a UI



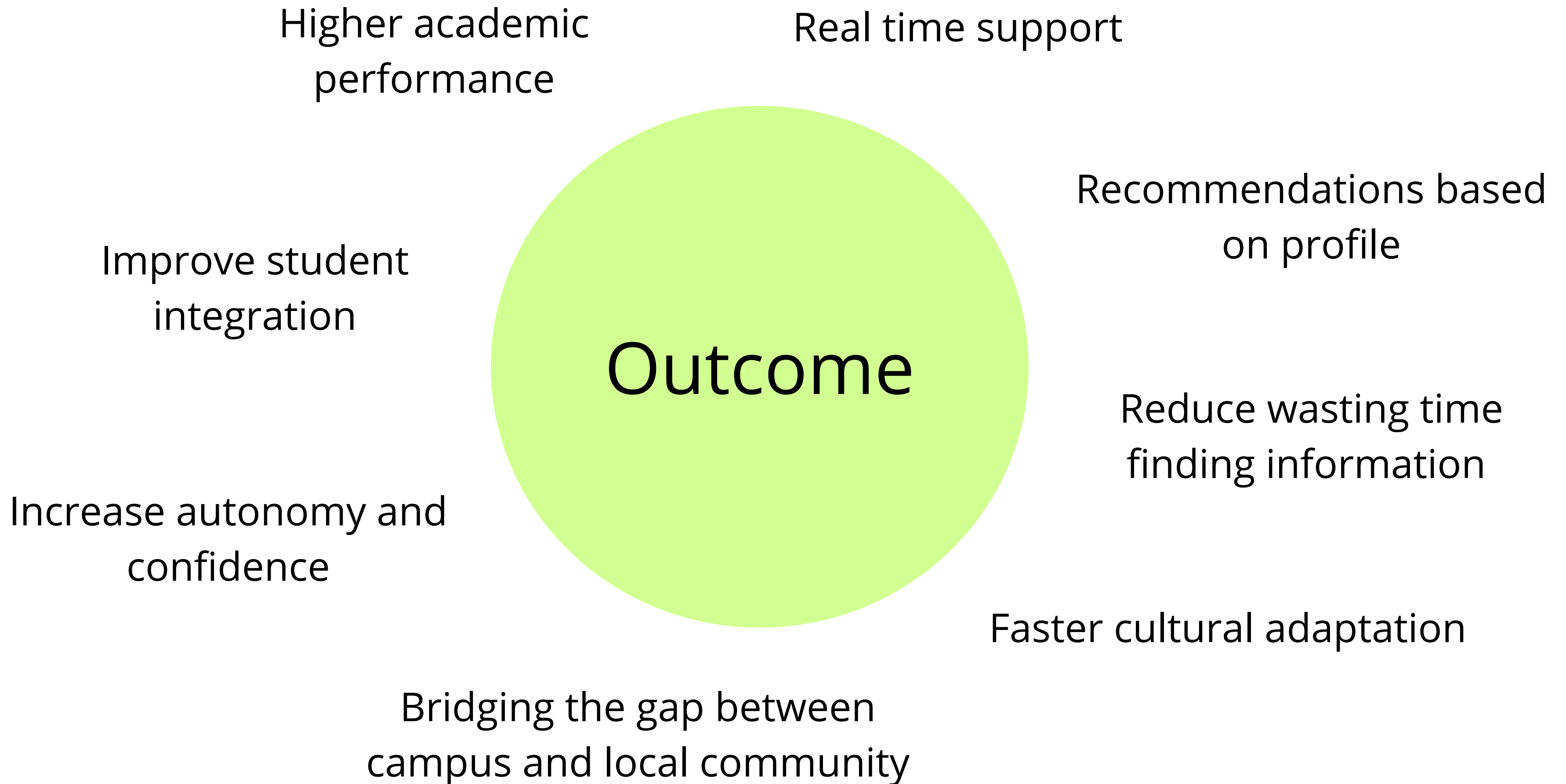
Type your message here or pick from the prompts



# Functions

- Real Time translation in the student's native language
- Transcriptions to student's native language
- Task managing in students Working Groups
- Assistant in School Facilities
- Assistant in legal needs
- Connection to the local community, about part-time jobs, volunteering, local events, local transports and accommodation
- Assistant to explore the city, with itinerary suggestions





Thank you for your attention!

